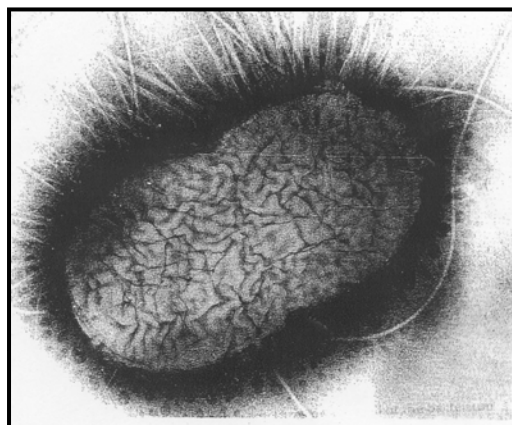
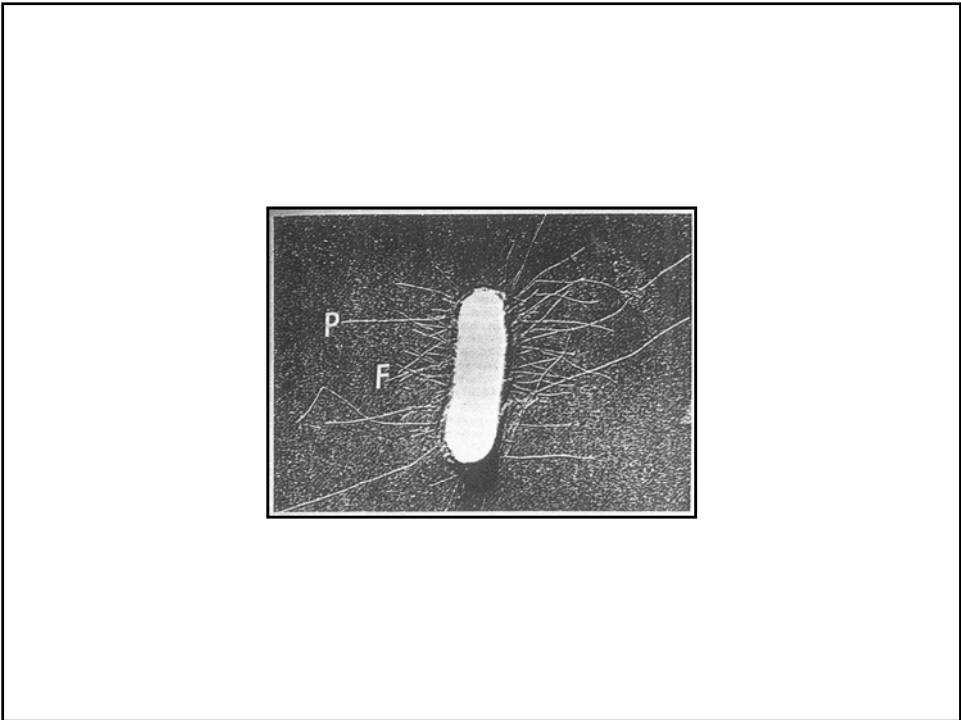
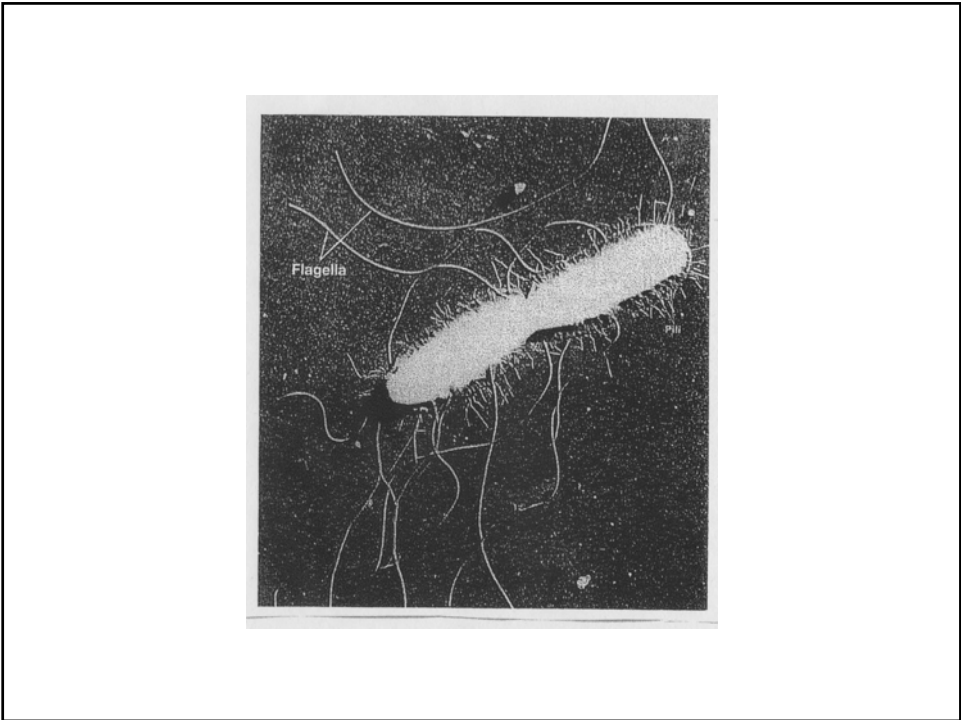
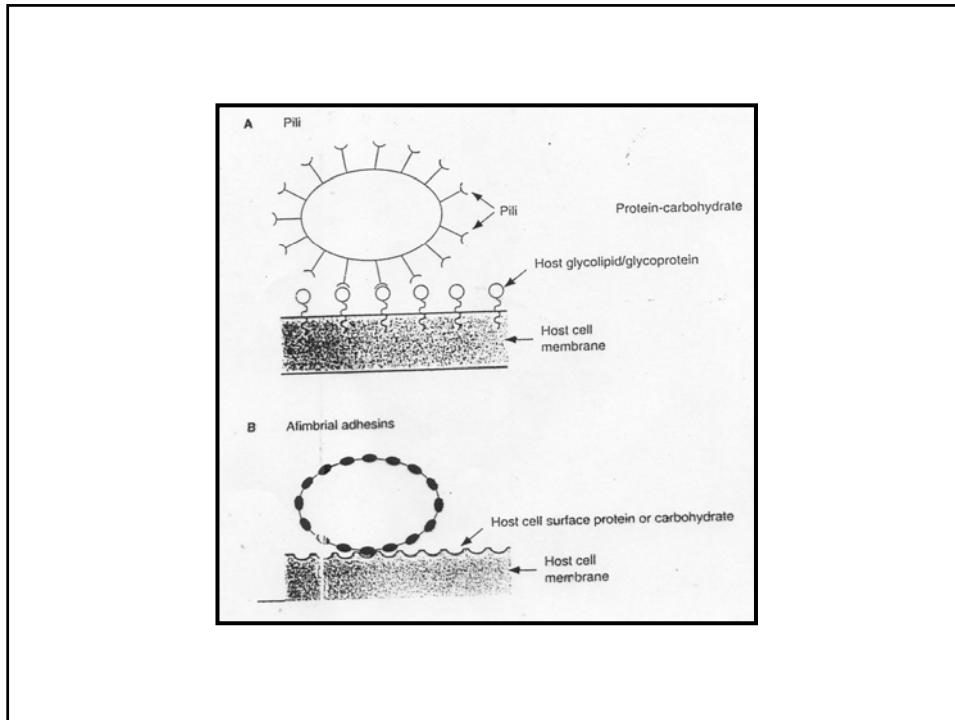


Fimbrie o Pili

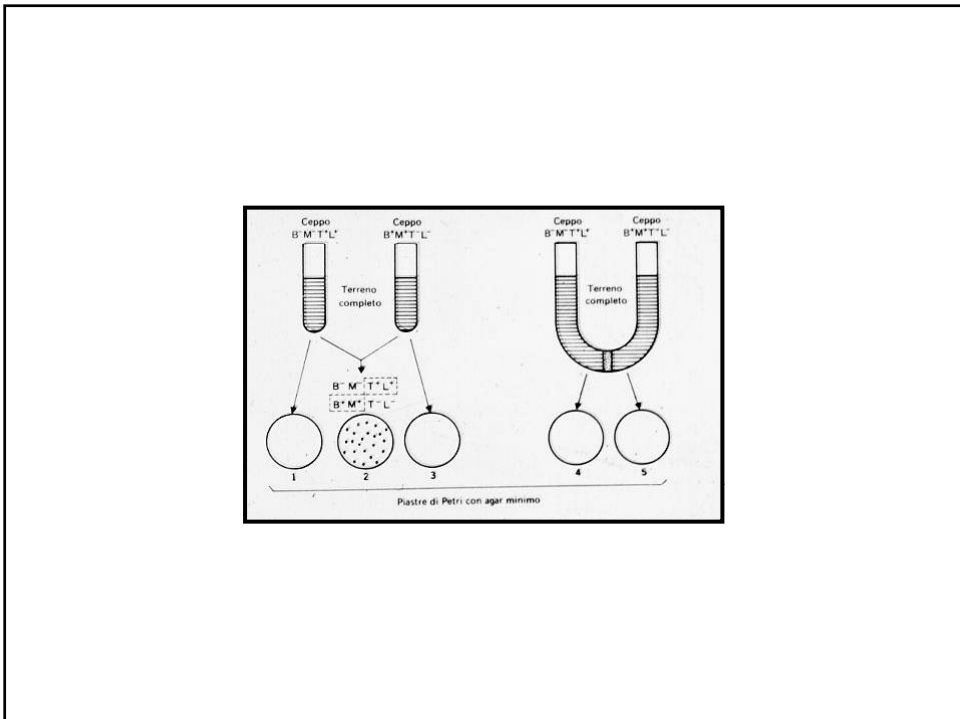
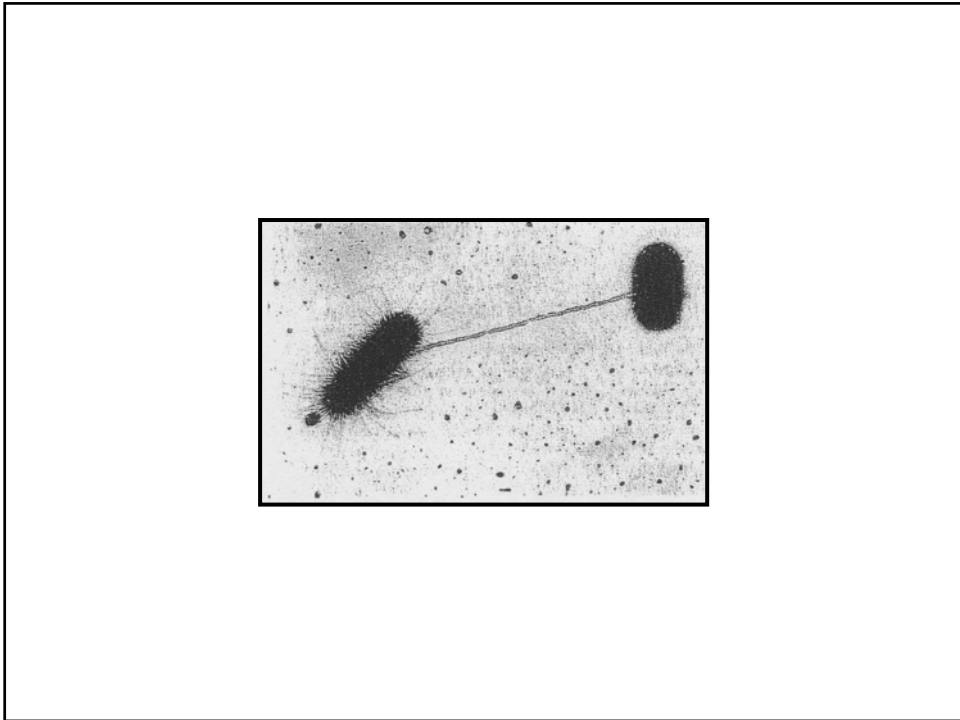






RELATIONSHIP BETWEEN ADHERENCE OF BACTERIAL TO EPITHELIAL CELLS IN VITRO AND BACTERIAL INFECTIVITY IN VIVO

BACTERIA	BACTERIAL VARIANTS	RELATIVE ADHERENCE IN VITRO	RELATIVE INFECTIVITY IN VIVO	INVESTIGATORS
GONOCOCCI	T 1 (FIMBRIATED) T 4 (NONFIMBRIATED)	GOOD POOR	HIGH LOW	SVANSON [103];BUCHANAN AND PEARO WATT AND WARD[87];PEARCE AND BUCHANAN [87]
ESCHERICHIA COLI (ENTEROTOXIGENIC)	CF POSITIVE CF NEGATIVE	GOOD POOR	HIGH LOW	SATTERWHITE ET AL.[105]
STREPTOCOCCI	DEXTRAN POSITIVE DEXTRAN NEGATIVE	GOOD POOR	HIGH LOW	SCHELD ET AL. [106]; RAMIREZ RONDA
SALMONELLA	FIMBRIATED NONFIMBRIATED	GOOD POOR	HIGH MODERATE	DUGUID AND OLD[5]
E.COLI	K88 POSITIVE K88 NEGATIVE	GOOD POOR	HIGH LOW	JONES AND RUTTEN [16]
PROTEUS MIRABILIS	FIMBRIATED NONFIMBRIATED	GOOD POOR	HIGH LOW	SILVER BLATT [91]; SILVERBLATT AND OFEK
BORDETELLA PERTUSSIS	FIMBRIATED NONFIMBRIATED	GOOD POOR	HIGH LOW	SATO ET AL [93]



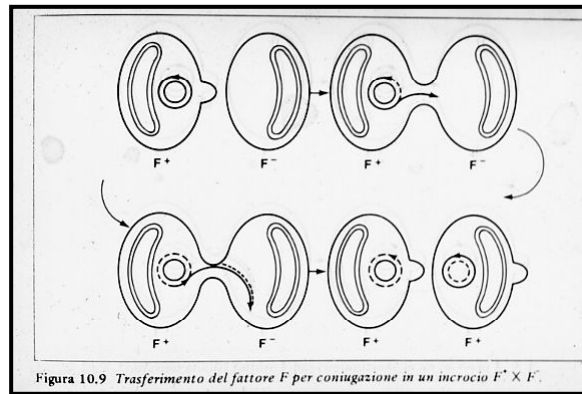
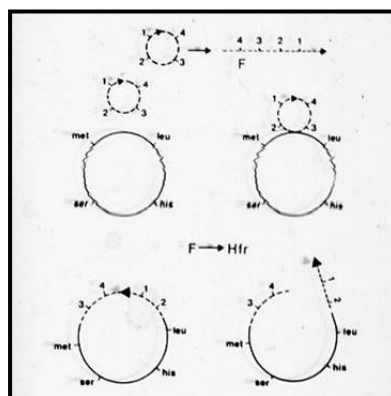
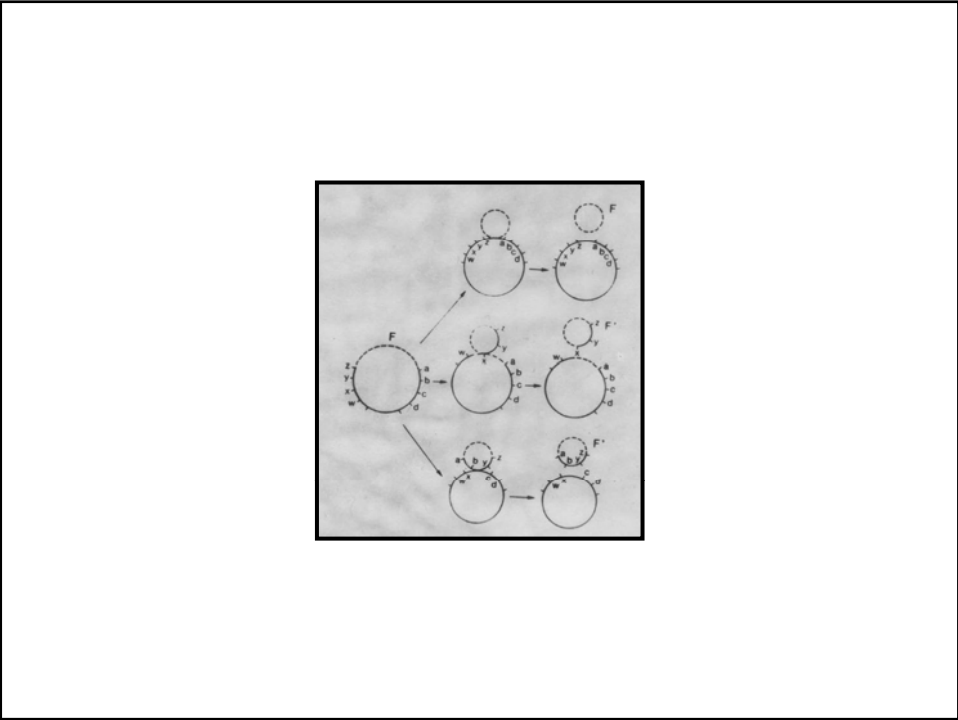
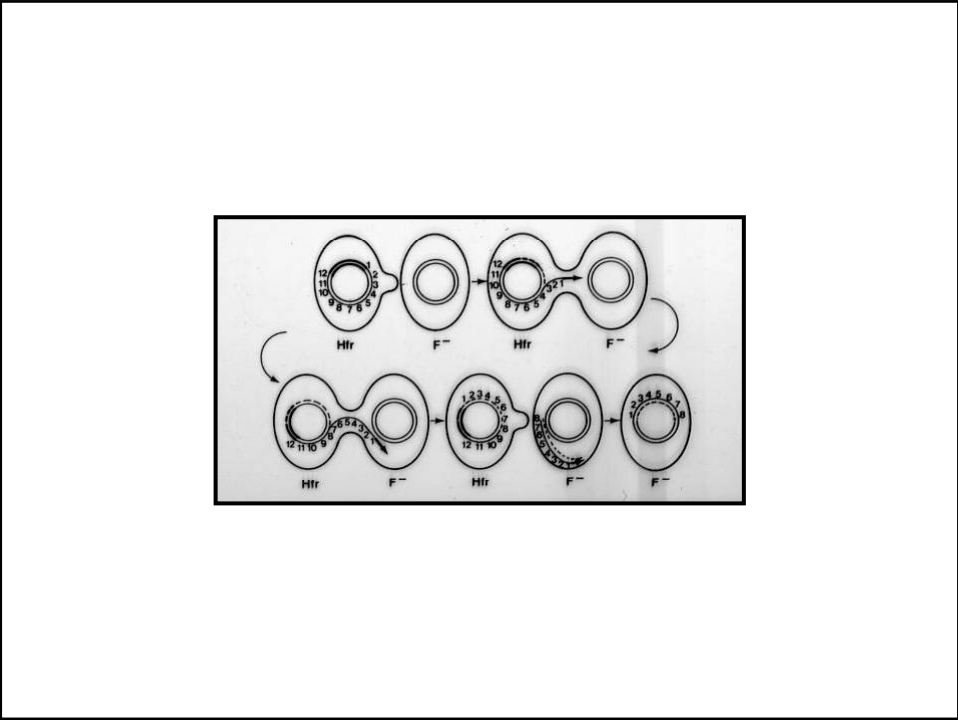


Figura 10.9 Trasferimento del fattore F per coniugazione in un incrocio F⁺ x F⁻.





Tipi di Plasmidi

F		
Col		
R		
Metabolici	Hys Ind Lac	Raf Sac Ure
Degradativi	Cam Nah	Oct Tol
Di patogenicità	Bhs Ent Ext	Hly San

